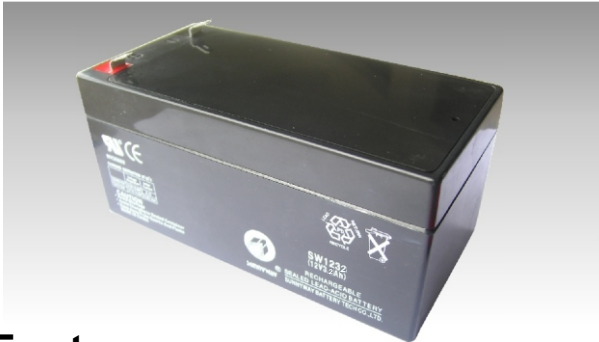




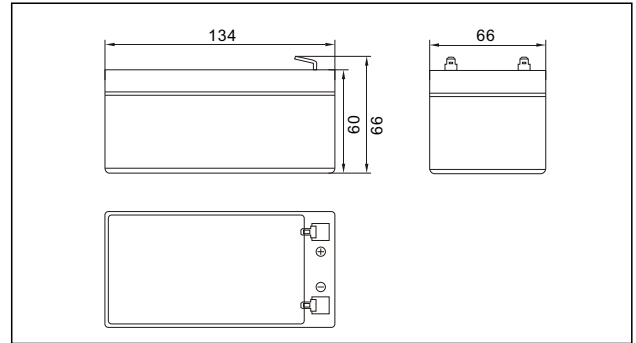
ALPHA HOUSE

intelligent power

AH12-3.2(12V3.2AH)



Outer Dimensions(mm)



Features

- Excellent high temperature performance;
- Excellent cycling performance;
- High strength ABS material;
- Plates: large capacity and thick plate structure design;
- Separator: glass fiber with high adsorption and high stability.

Applications

- Telecom & UPS;
- Medical equipment;
- Emergency lighting;
- Vacuum cleaner;
- Fire & security system;
- Photovoltaic & Solar & wind power system.

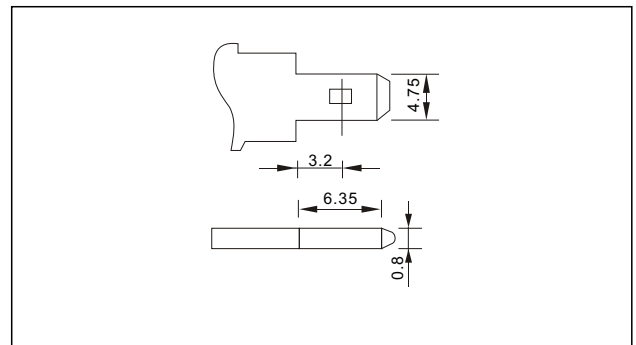
International Standards

- GB/T 19639-2014;
- JIS C8704-1:2006;
- IEC 60896-21/22:2004.

Specifications

Nominal Voltage		12V
Rated capacity (10 hour rate)		3.2Ah
Dimensions	Total Height	66mm (2.60 inches)
	Height	60mm (2.36 inches)
	Length	134mm (5.28 inches)
	Width	66mm (2.60 inches)
Weight Approx		1.24 Kg (2.73 lbs)

Terminal Type(mm)



Characteristics(25°C)

Capacity	10 hour rate(0.30A) 5 hour rate(0.56A) 1 hour rate(1.98A)	3.04AH 2.81AH 1.98AH
Internal Resistance	Full charged Battery	50mΩ
Capacity affected by Temperature (10 hour rate)	40°C(104°F) 25°C(77°F) 0°C(32°F) -15°C(5°F)	102% 100% 85% 65%
Self-Discharge	Capacity after 6 month storage	82%
Terminal		T0
Charge (constant voltage)	Cycle	Initial Charging Current less than 1.32A Voltage 14.4-14.7V
	Float	Voltage 13.5-13.8V

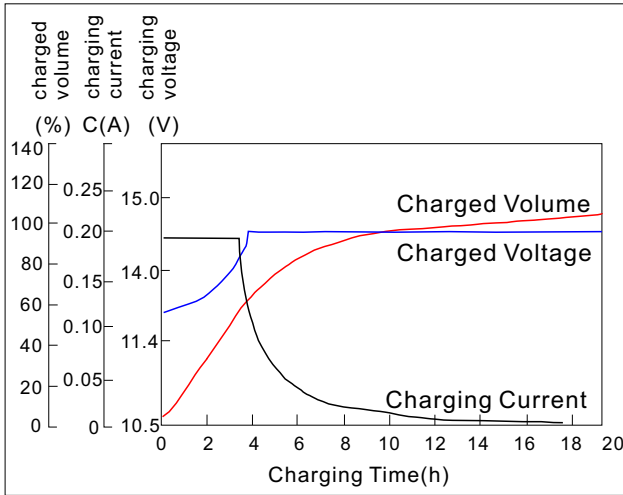
Constant Current(Amp) and Constant Power(Watt) Discharge Table at 25°C(77°F)

Time		5min	10min	15min	30min	1h	2h	3h	4h	5h	8h	10h	20h
9.60V	A	11.52	7.22	5.60	3.68	2.08	1.12	0.83	0.66	0.56	0.37	0.30	0.17
	W	122.11	78.69	59.92	39.74	22.67	12.21	9.32	7.27	6.29	4.19	3.37	1.85
10.20V	A	10.56	7.07	5.15	3.49	1.98	1.07	0.82	0.64	0.55	0.36	0.30	0.16
	W	116.69	77.73	57.39	39.30	22.32	12.14	9.22	7.26	6.28	4.16	3.37	1.83
10.50V	A	9.79	6.75	4.80	3.39	1.92	1.05	0.80	0.61	0.54	0.36	0.29	0.16
	W	109.69	75.96	54.24	38.61	21.89	12.06	9.16	6.99	6.26	4.14	3.36	1.82
10.80V	A	8.92	6.45	4.48	3.23	1.86	1.03	0.78	0.60	0.52	0.35	0.29	0.16
	W	101.21	73.57	51.30	37.33	21.44	11.86	9.09	6.96	6.06	4.09	3.34	1.82
11.10V	A	8.00	6.08	4.16	3.01	1.76	1.00	0.75	0.59	0.50	0.34	0.28	0.15
	W	92.00	70.22	48.26	35.19	20.59	11.70	8.84	6.92	5.87	4.03	3.30	1.79

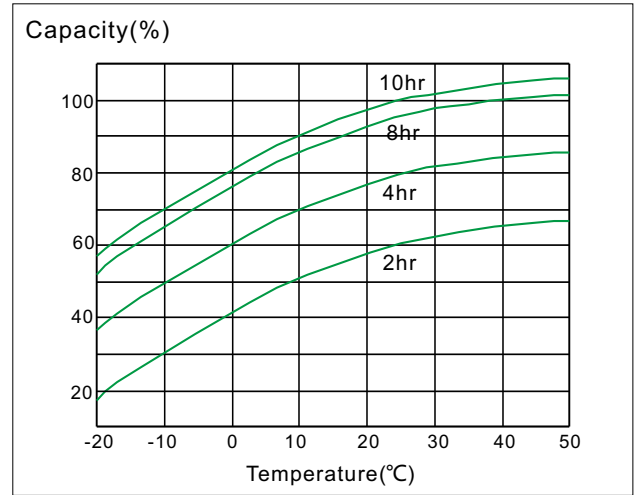


Characteristics Curves(25°C)

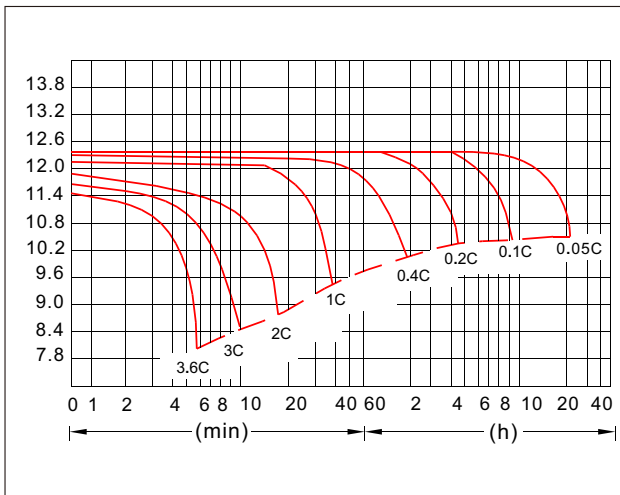
Charging Characteristics



Curves Of Discharge Capacity And Temperature



Discharge Curves



Life Characteristics Of Cyclic Use

